



SAAB 900 CARLSSON FRONT BUMPER

Installation Manual

This manual is also available at a-zperformance.com

READ CAREFULLY!

Careless installation and operation can result in serious injury or equipment damage. Please read and understand all safety precautions and operating instructions before installing and operating this product! This guide identifies potential hazards and has important safety messages that help you and others avoid personal injury.

WARNING and CAUTION are signal words that identify the level of hazard.

These signal words mean:

WARNING signals a hazard that could cause serious injury or death, if you do not follow recommendations.

CAUTION signals a hazard that may cause minor to moderate injury, if you do not follow recommendations.

Before applying a paint job, install the bumper as described in the installation instructions!

This is because during the installation of the unpainted bumper, you can adjust the fit and perform minor sanding without damaging the polish of your car.

Be aware that the process of installing deviates from the manufacturer's solution!

The front bumper is secured with two strong, galvanized stud bolts that require 12mm holes to be drilled according to the included installation guide and drilling template.

Only the original Carlsson impact-absorbing foam pad fits between the bumper and the factory aluminum support structure without modification. Non-Carlsson foam pads can be fitted by adjusting their shape. The bumper can also be installed without an impact-absorbing foam pad.

The side flanges of the bumper can be secured to the factory wheel well holes using rubber pads of the original size and shape.

The external appearance of the bumper is identical to the original Carlsson bumper.

Due to the synthetic resin-glass fiber manufacturing technology, the bumper is more fragile and has less flexibility than the original factory part.

The bumper does not have any certification or official approval.

⚠ WARNING

- Never work under vehicle before properly securing vehicle.
- Always use appropriate and adequate care in lifting components into place.
- Never use a jack to support the vehicle.
- Always use jack stands in pairs to support the vehicle.
- Always use jacks or jack stands only on a hard, stable, and level surface.
- Never exceed the rated capacity of a jack or jack stands.
- Always verify that the parking brake is set, the transmission is in park (automatic) or reverse (manual) and the rear wheels are blocked before working on vehicle.
- Always insure components will remain secure during installation and operation.
- Always tighten all nuts and bolts securely, per the installation and operation.
- Always replace all worn or damaged parts before operating.
- Always use extreme caution when cutting and trimming during fitting.
- Always wear safety glasses when installing this kit. A drilling operation will cause flying metal chips. Flying chips can cause eye injury.

Read installation and operating instruction!

⚠ CAUTION

Moving Parts Entanglement Hazard

- Part edges may be sharp!
- Always use proper posture / lifting technique or get lifting assistance while handling and installing product.

NOTICE

Equipment Damage

- Never tow a vehicle by attaching a tow bar on the eyelets on the bumper!
- Do not attach tow bars directly to the bumper. Damage to bumper may occur.

NOTES

Will fit the following models:

- Saab 900 - 1990-1992 - all Carlsson models.
- Saab 900 - 1987-1993 - all models (facelift models after 1987)

Does not fit the following models:

- Pre-facelift models (1978-1987), also known as "flat nose" models.

The kit includes one front bumper, rubber strip for sealing joints, and the necessary mounting hardware.

CONTACT DETAILS

If you have any questions, we are happy to assist you at our contact details provided below:

E-mail: info@azperformance.com

Phone number: +36 30 6364 672

1.

Restore your car to the condition shown in the picture

Dismantle the following parts from your car:

- Radiator grille
- Front bumper, which after disassembly, reassemble and then securely fix its aluminum frame. It's surface should be clean and smooth.



2.

Stick the drilling template onto the bumper frame

You will find the drilling template in the white bag inside the bumper box.

- The drilling template is a sticker, from which you need to separate the carrier paper on the back, then you need to stick it onto the bumper frame.



IMPORTANT!

The drilling template sticker must fit exactly to the following reference points:

- The inner edge of the factory holes of the fog light holder bracket.
- The lower and upper inner edge of the bumper frame.



3.

Make the holes at the points marked on the drilling template

- The 2 holes should be made with a 12mm metal drill bit at the 2 points marked on the drilling template.

WARNING! Be careful with the drill!



IMPORTANT!

Place a piece of wood behind the bumper frame to prevent the passing drill bit from damaging the radiator or the intercooler!



4.

Insert the stud bolts into the holes

- *Remove the drilling template sticker from the bumper frame.*
- *Prepare the 2 stud bolts, which you can find in the white bag inside the bumper box.*



**5.
Apply the bolts**

- Put a washer on each of the stud bolts, then from the back of the bumper frame, push them through the holes.
- Put a washer on each of the stud bolts, then a nut on each, and then tighten them strongly.



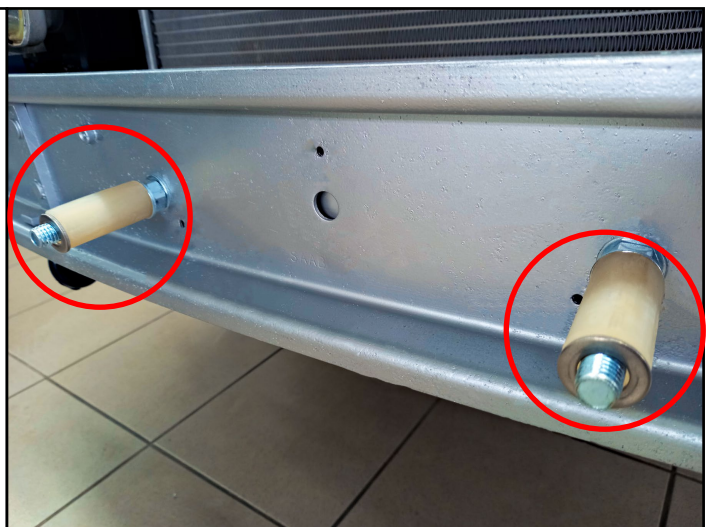
**6.
Pull the stud bolts together**

With strong movements, pull the 2 stud bolts together to a distance of 27.5 cm.



**7.
Apply the rubber spacers**

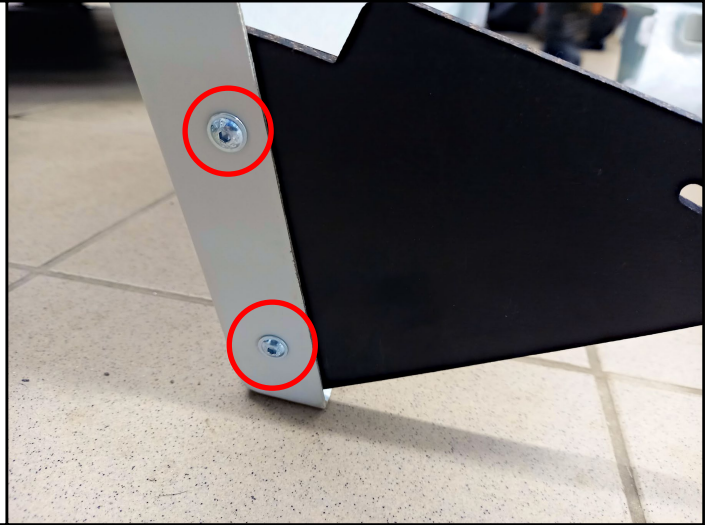
- Put a washer on each of the nuts, pull the rubber spacers onto them, then put a washer on each of those as well.



8.

Screw the rubber side support plates onto the side edges of the bumper

- You will find the rubber side support plates and their fixing screws in the bumper box, in the white bag.
- Secure the rubber side support plates to the bumper with 2 screws on each side.



9.1

Protect you car's paintwork

To protect your car's paintwork, mask off the part on the fenders where the side edges of the bumper will fit.



9.2

Protect you car's paintwork on the other side

To protect your car's paintwork, mask off the part on the fenders where the side edges of the bumper will fit.



10.

Prepare the bumper, then put it on the car

- Before you put it on, check the 27.5cm distance of the stud bolts and prepare the self-locking nuts, which you can find in the bumper box, in the white bag.
- We recommend that you do not put it on alone, be at least two or three people, one person on each side and one person in front.**



10.1

Check if everything is alright

Check if it looks alright, and everything is in place!



11.

Apply the nuts

- Put a washer on each of the stud bolts, then put a self-locking nut on each.
- Tighten the nuts only as much as is absolutely necessary for fixing! Do not force it!



12.1 Bumper Positioning

The bumper is in the correct position if it fits perfectly at the points marked on the picture.



12.2 Bumper Positioning

The bumper is in the correct position if it fits perfectly at the points marked on the picture.



13.1. Secure the side support rubber sheets

- *Secure the side support rubber sheets in the factory holes found in the wheel arch drums*
- *You can find the sheet screws needed for installation in the bumper box, in the white bag.*



13.2

Secure the side support rubber sheets

- Secure the side support rubber sheets in the factory holes found in the wheel arch drums
- You can find the sheet screws needed for installation in the bumper box, in the white bag.



14.1

Put the rubber strips on the side edges of the bumper

- Remove the protective masks from the fenders. Put on the rubber strips.
- You can find the rubber strips in the bumper box, in the white bag.



14.2

Put the rubber strips on the side edges of the bumper

- Remove the protective masks from the fenders. Put on the rubber strips.
- You can find the rubber strips in the bumper box, in the white bag.



15.
Final check before painting

- Make sure that the bumper is in the perfect position.
- Make sure that all fasteners and screws are in place.
- Try to move the bumper with moderate force — the bumper should **not** move.
- If it moves, check the fastenings.



16.
Preparation for painting

Carefully remove the bumper, taking care of the car's paintwork.



17.
Take the bumper to a paint shop and have it painted

- *Attach the license plate frame.*
- *Secure the license plate frame with a nut, do not use a sheet screw.*



18.

Mount the painted bumper on the car

You should follow the same steps that you followed before.



19.

Install the radiator grille

Also, make sure that the bumper is in the correct position.



The installation is complete! We hope that you appreciate the new look and feel of your car.

Should you have any questions, we are always happy to assist you at any of our contact details listed at the start of this manual.

Thank you for choosing us!