



## **Installation Manual**

### **A-Zperformance 6-Point Subframe Brace**

**SAAB 900 9-3 1994-2002**



All parts are ready to install on the car





The plastic engine guard plates has to be removed.





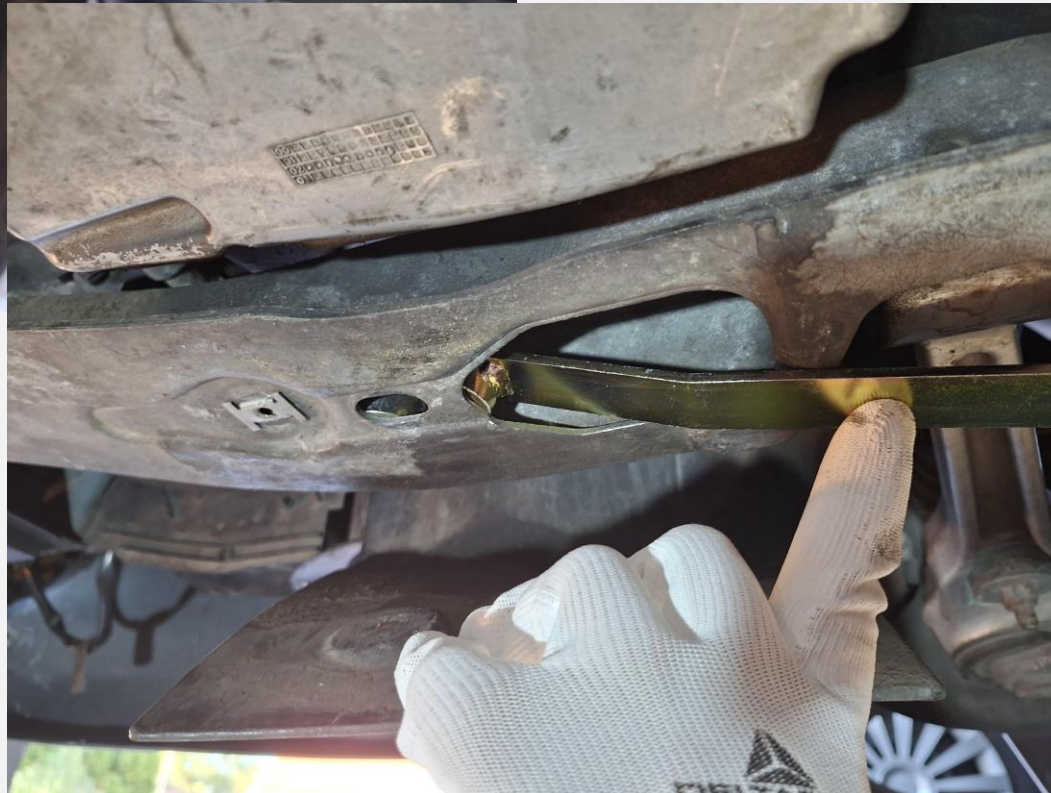
The engine bottom without plastic engine guard plates.



### **Long mounting inserts for left and right sides**

Insert the long mounting inserts into the engine subframe holes on both sides.

You can do it with some push, no tools are required.







Align the long mounting inserts so that the screw threads are visible in the center of the holes.

No tools are required, you can adjust it by hand.



### **Rear Left small mounting insert**

Insert the rear left mounting insert into the engine subframe hole.

Do not push it, do it with very small movements, no tools are required.







### **Rear Right small mounting insert**

Insert the rear right mounting insert into the engine subframe hole.

Do not push it, do it with very small movements, no tools are required.



### **Rear Left and Right small mounting inserts**

Right positions of the rear left and right mounting inserts before the A-Zperformance 6-point subframe brace installations







In case you don't have someone to help you, the easiest way is to attach the A-Zperformance 6-point subframe brace to any engine parts with any rope before you start the installations.



## Screwing sequence for installations

1. Rear Left



2. Rear Right





## Screwing sequence for installations

3. Middle Left



4. Middle Right





## Screwing sequence for installations

5. Front Left



6. Front Right





Installed A-Zperformance 6-point subframe brace





Install the plastic engine guard plates back.

## **The installation is complete!**

We hope that you appreciate the new feel of your car.

Should you have any questions, we are always happy to assist you at any of our contact details listed at the start of this manual.

**Thank you for choosing us!**